

# SPOT LIGHT

## SPECIFICATION

Series	MFSLR/210/W
Input Voltage	220-240Vac , 50Hz
Power Factor	> 0.9
Color Temperature	2700K , 3000K , 4000K , 5700K , RGB
CRI	70 Ra , 80 Ra , 90 Ra
Beam Angle	15° , 30°
Driver	Inventronics , Meanwell , Done , Moso or equivalent
LED Chip	Osram , Lumileds or equivalent
Housing Materials	Die-casting Aluminium with Tempered Glass Cover
Color	Black
Operating Temperature	- 40°C to + 50°C
Protection Class	IP 66
Life Time	50000 Hrs
Surge Protection	4KV line-line 6KV line-earth
Controls	DMX512



Accessories (Option)

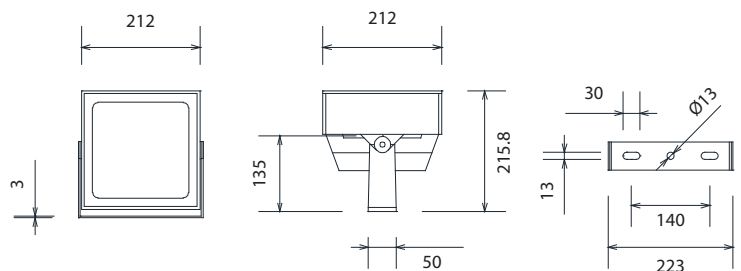
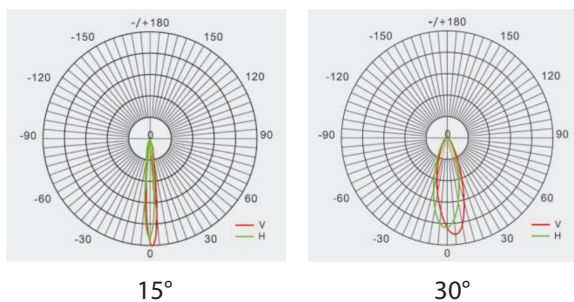


Anti-glare Baffle

Remark \*(All of Tolerances  $\pm 10\%$ )

Model	Rated Power (W)	Efficacy (lm/W)	Dimension WxLxH (mm)	Weight (kg)
MFSLR/210/W	100	80 (WW , CW , DW) 30 (RGB) 35 (RGBW)	212 x 212 x 215.8	4.5

## Light Distribution Curve



Dimension Drawing (mm)

